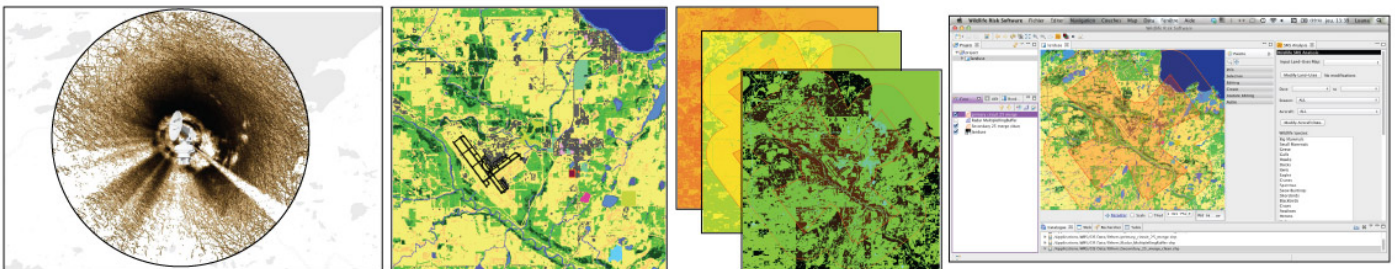




Wildlife Risk Software (WRS®) allows to spatially and to analyse bird hazard risk. This software integrates all *Airport Bird-Hazard Risk Assessment Process* elements and those of *Safety Management Systems (SMS)*.



SPECIFICATIONS

- User-friendly and intuitive interface
- Computes geospatially bird-strike risk
- Allows displaying and modifying land-use around an airfield
- Computes bird-strike risk according to a Safety Management Systems (SMS) scale including probability, severity and exposure
- Generates easy interpreted risk maps with color codes associated with risk
- Allows displaying of several base maps (e.g.: land-use, orthophotos, topographic information, etc.)

LAND-USES PLANNING

- Models effects of potential land-use modifications on wildlife hazard
- Helps to identify the best location for new infrastructure, land-use

WILDLIFE MANAGEMENT

- Highlights wildlife or species activity hotspots and helps to focus wildlife management efforts
- Allows to see wildlife activity hotspots at the scale of the airport as well as at the scale of the bird hazard zone
- Allows to see wildlife activity hotspots representing a risk to an airport according to year, season and aircraft type

FLIGHT PLANNING

- Quickly identifies the bird-strike hazard for a specific location and period of time
- Allows the delimitation of training areas